

## What is MRSA?

- MRSA stands for Methicillin-resistant *Staphylococcus aureus* (MRSA).
- It is a bacterium that causes infections in different parts of the body. It's tougher to treat than most strains of staph because it's resistant to commonly used antibiotics.
- Extremely common in athletic environments
- It can be killed with heat, certain disinfectants, and UV light.
- Safe zone temperature to kill MRSA is over 140°F (60°C).

## Heat Eradication Chart

BACTERIA STRAIN	LETHAL TEMP.	TIME
<i>Pasteurella spp.</i> Reference: Health Canada, 2007	55°C/131°F	15 minutes
<i>Staphylococcus aureus</i> Reference: Dimalisile, et al., 2005	63°C/145°F	20 minutes
<i>Listeria monocytogenes</i> Reference: Rowan & Anderson 1998	63°C/145°F	30+ minutes
<i>Methicillin Resistant Staphylococcus aureus (MRSA)</i> Reference: Abbott, 2011	65°C/149°F	45 minutes
<i>Salmonella sp.</i> Reference: Feachem 1983	60°C/140°F	60 minutes
<i>Pseudomonas aeruginosa</i> Reference: Abbott 2011	60°C/140°F	75 minutes
<i>Escherichia coli</i> Reference: Abbott 2011	60°C/140°F	105 minutes

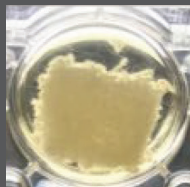
## MRSA (Strain USA-300)

*Turbidity indicates bacterial growth.*

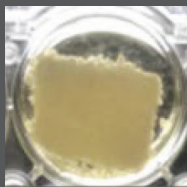
The clearer the liquid is around the towel sample, the less bacteria there is.



MRSA-infected



After 15 min



After 60 min

## About Cres Cor...

When your business is on a roll we hope it's with Cres Cor's hot cabinets, ovens, utility cabinets, racks, dollies and a host of other Cres Cor quality products.

### COMPANY HISTORY

Cres Cor, a family owned company, has been a moving force in the foodservice industry since 1936 and is centrally headquartered near Cleveland, Ohio. With over 275,000 square feet of state-of-the-art manufacturing and distribution facilities, we have made a commitment to unsurpassed reliability and superb customer service.

### COMPANY FOCUS

"Our focus is to continually bring new ideas and exciting, labor and money saving products to market" says Cliff Baggott, Cres Cor president. "We are an 80+ year 'young' company, always striving to improve our products, processes, and ourselves. We feel our core strengths resonate well in other areas, like sports, as well."

### COMPANY TODAY

Today, you can visit Cres Cor many different ways. Come see our product information on our website, call our Customer Care staff directly at our world headquarters or contact your local Cres Cor sales representative.



To learn more, visit: [www.crescorsport.com](http://www.crescorsport.com)  
Visit Tri-C Club Supply at [www.duffystric.com](http://www.duffystric.com) to purchase.

**CRES COR SPORT**

**CRES COR SPORT**



Perfect for:  
Locker rooms  
Spas  
Hospitals  
Gyms  
and more!



**QUIK DRY™**  
and the  
**MRSA-NATOR™**



# MRSA-NATOR™

**DRASTICALLY REDUCES**  
the risk of contamination from  
MRSA and other infectious  
viruses and bacterias.



# AW-SH-M  
(Optional stand available)



# AW-SF-2M

## FEATURES:

- Warms and Holds standard or larger bath towels as well as other items needed to keep warm, safe, and dry
- (2) shelves per cavity – (4) shelves per full size unit
- Warms a full load of towels in 4 hours or less
- No fans or blowers means quiet, noise-free operation

Interior of cabinet designed for even temperature distribution throughout.



## Full-Size Model # AW-SF-2M

TOWELS			DIM "A"	DIM "B"	DIM "C"
CAP	SIZE		WIDTH	DEPTH	HEIGHT
50	24 x 48	IN	27	32	76-1/2
	610 x 1220	MM	686	813	1943

## Half-Size Model # AW-SH-M

TOWELS			DIM "A"	DIM "B"	DIM "C"
CAP	SIZE		WIDTH	DEPTH	HEIGHT
30	24 x 48	IN	31	31	32
	610 x 1220	MM	787	787	813

- Radiant heat for even temperature all the way to the center - not just the outer towels
- Compatible with standard 120V, 20 Amp outlet
- Stainless Steel Construction

## PROPER LOADING



## IMPROPER LOADING



# QUIK DRY™

## WARMS & DRIES:

Shoes, Gloves,  
Hand Towels, and  
Athletic Equipment



# QD4P  
(Optional stand available)

## Model # QD4P FEATURES:

- Insulated heated cabinet efficiently dries up to four pairs of athletic shoes
- Provides quick heat with a high/low temperature switch, ranging from 120°F (49°C) to 160°F (71°C)
- Black powder coated aluminum outer panels, .060 stainless steel base plate, fiberglass insulation, stainless steel interior
- Comes standard with two chrome plated wire grids
- Clear easy-open side-by-side doors with magnetic latches
- Includes 1" adjustable legs
- Fits easily on a counter top or table(optional stand available)
- Standard 500 Watts, 120 Volts, 4.5 Amps
- Weight: 73 lb. Height 23-3/8", Depth 20-1/8", Width 22-1/2"
- One year parts warranty

## Model # QD3 FEATURES:

- Heated mobile cabinet designed to warm and dry athletic equipment like towels, shoes, gloves, and more
- Three thermostatically-controlled heated shelves for added versatility
- Push/pull handle allows for easy maneuvering
- Heavy duty swivel casters, two with brakes; rear casters are fixed to provide stability during transport
- Standard 1000 Watts, 120 Volts, 8.5 Amps; provides quick heat up to 140°F (60°C)
- Weight: 165 lb. Height 39-1/2", Depth 18.14", Width 48.6" (with a 5" caster)
- One year parts warranty

Custom  
graphics  
available!



# QD3